

## Car2PC – Toyota, Lexus, Scion



### Disclaimer

Modifying the radio may void any outstanding warranty it may have.

- ◆ This product is not affiliated with any of the OEM manufactures
- ◆ There are no warranties expressed or implied by purchase of this product
- ◆ While every care has been taken to provide a quality product, we cannot guarantee the Car2PC BMW adapter to function correctly if installation is not done according to the instructions in this guide
- ◆ We're not liable for misuse of this product. Misuse includes improper installation, damage to the board or radio while trying to install, and illegal use of the modified radio

### Tools needed

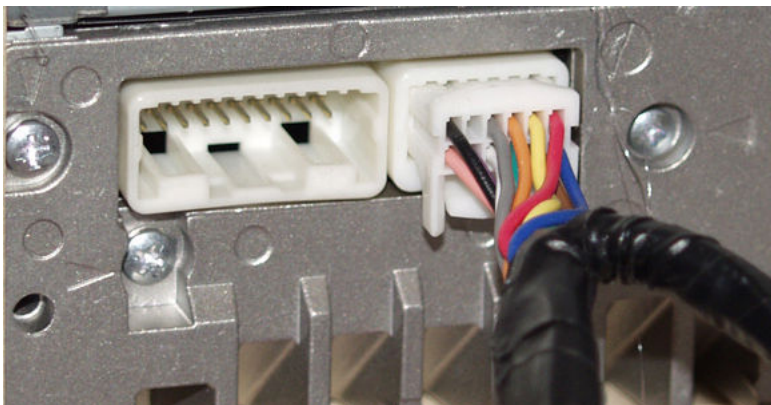
- 1 None.

### Preparation

1. Turn off car engine and remove key from ignition
2. Un-mount your radio from the dash in order to get access to the back side of the radio.

### Adapter installation

3. Your car stereo can have either 12 pins square connector or 12 pin shaped one. Please make sure you choose the appropriate cable for your car stereo (TOY1 or TOY). Attach the matching cable to the back of the Toyota stereo as shown below
4. Find a place where you can place Car2PC. In many cars there is enough room in the dash to place Car2PC. Note: Make sure you mount Car2PC in a place with enough room so when you mount the car stereo back you do not break the adapter
5. You may use glove box or other spaces in a dash to direct USB+ Audio cables out
6. Mount your car stereo back into the dash, make sure it's clips are securely fastened
7. Now you can turn you car stereo on and switch it over to CD Changer mode. It should show Disk 1, Track 01 on a display.
8. Congratulations ! You have installed Car2PC-TOY adapter and you may use it right away with your PC/laptop



### Driver installation

9. Make sure you turn your car stereo on
10. Connect USB cable to your PC/laptop
11. Upon connection PC if it runs Windows 2000 or XP will prompt



And then the dialog below will appear:



12. Insert driver's disk into CD drive and click Next
13. When Windows comes up with the message below, just click —Continue Anyway“button



14. This is it. Driver installed and it is ready to be used with the included WinAmp software.

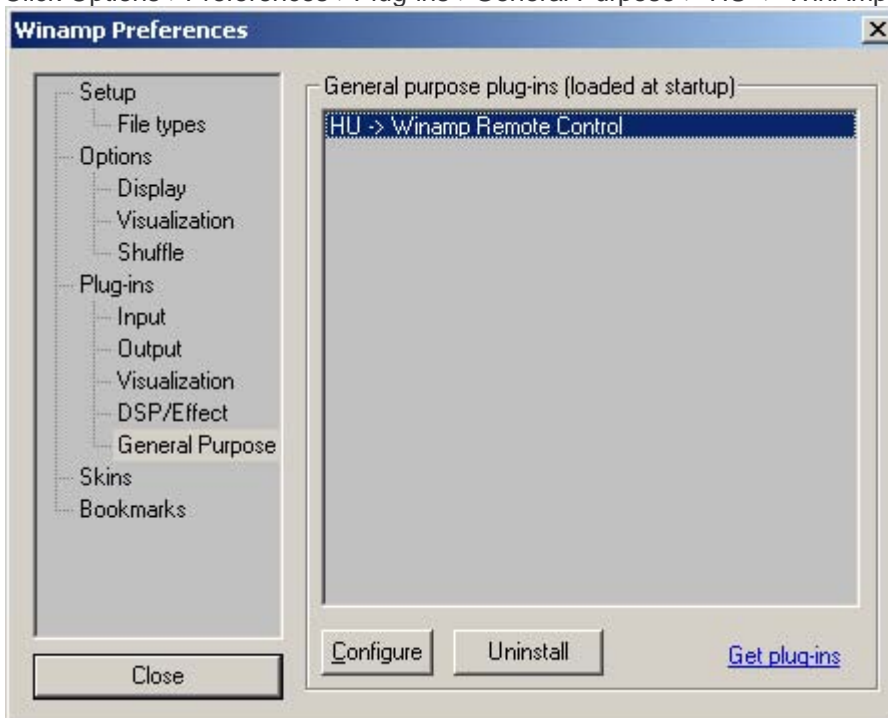
### Software installation

15. Locate the directory D:\winamp2\ and run the winamp295.exe file. Follow the instructions on the screen
16. Once installed make sure to run the plug-in installation located on hump3\_plugin directory

### Configuring Car2PC

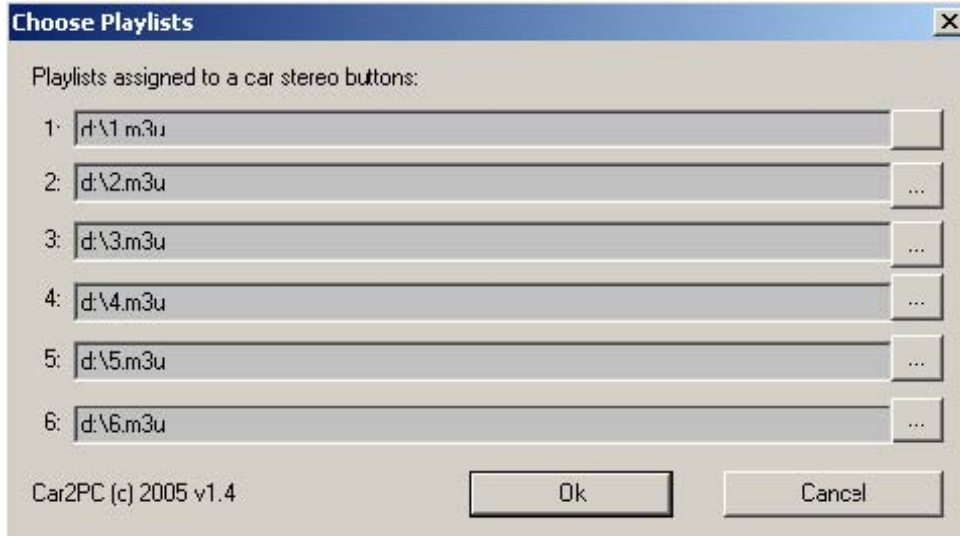
WinAmp plug-in included on a disk supports very simple concept of playlists. Whenever you select buttons 1 through 6 on your headunit, plugin will load the appropriate playlist and start playing it from the position it remembers. In order to configure which playlist will be playing upon button press, do the following:

1. Open WinAmp
2. Click Options->Preferences->Plug-ins->General Purpose->"HU -> WinAmp Remote Control" as shown below:



3. Click on Configure button

- 4 On the dialog below you will be able to choose the playlist for every button from 1 to 6



- 5 Once done, click Ok